

Communities That Care Youth Survey (CTC)

Weymouth Public Schools September 2009 Grades 7 - 12

**Prepared by the Weymouth Youth Coalition Substance Abuse
Prevention Team and the Institute for Community Health**

Data from CTC survey results from 2007, 2008, and 2009

The Communities That Care Youth Survey is designed to identify the levels of risk and protective factors that predict problem behaviors such as alcohol, tobacco and other drug use, poor school achievement, and delinquency.

Proven reliability and validity- all scales meet scientific standards of reliability and validity.

- ✓ Self-administered, voluntary questionnaire
- ✓ Reminders anonymous, confidential, and to answer honestly
- ✓ Incorporated mechanisms for detecting invalid surveys (detecting lies)
- ✓ Cleaning process

Sample Characteristics

Table 1.1: Selected Demographic Characteristics of Surveyed Youth

	Number of Students	Percentage of Students
Overall Valid Surveys	2497	100.0%
Sex		
Female	1282	51.3%
Male	1201	48.1%
Did not respond	14	0.6%
Ethnicity		
White	1992	79.8%
African American	96	3.8%
Native American	25	1.0%
Hispanic/Latino	82	3.3%
Asian/Pacific Islander	83	3.3%
Other	80	3.2%
Mixed Origin	0	0.0%
Did not respond	139	5.6%

Note: Rounding can produce totals that do not equal 100%.

Source, MA DESE website,

<http://profiles.doe.mass.edu/profiles/student.aspx?orgcode=03360505&orgtypecode=6&>

Key Survey Findings

Core Measures and 3-Year Substance Use Trends

Risk and Protective Factors

The CTC survey collects information on factors that can protect youth or put youth at risk for problems and computes an easily interpretable score:

- Protective factors- buffer the exposure to risk by reducing the impact of risk or changing how youth respond to risk
- Risk factors- increase the likelihood of youth becoming involved in drug use, delinquency, school dropout, or violence

Risk and Protective Factors

- All Identified factors fall into one of four domains:
 - community
 - family
 - school
 - peer-individual
- Based upon the responses of the student survey questions, each factor and overall domain is scored on a scale of 0 to 100
 - 50 indicates the normative average
 - < 50 indicate the factor is relatively less present
 - > 50 indicate factor is relatively more present

Risk Factor Scores by Grade

Table 2.2: Risk Factor Scale Scores Reported by Surveyed Youth, by Grade

	6th	7th	8th	9th	10th	11th	12th
Community Domain							
Low Neighborhood Attachment	–	41	46	49	52	55	57
Community Disorganization	–	50	53	55	60	58	63
Community Transitions and Mobility	–	46	45	69	49	51	53
Laws and Norms Favorable to Drug Use and Firearms	–	31	39	46	57	62	68
Perceived Availability of Drugs and Firearms	–	21	27	35	42	51	56
Family Domain							
Poor Family Supervision	–	38	46	48	59	59	65
Poor Family Discipline	–	30	38	43	52	54	61
Family History of Antisocial Behavior	–	31	39	45	52	57	64
Parental Attitudes Favorable Toward ATOD Use	–	35	40	44	52	55	65
Parental Attitudes Favorable Toward Antisocial Behavior	–	44	52	52	58	58	64
School Domain							
Academic Failure	–	50	52	54	55	57	57
Low Commitment to School	–	37	44	43	52	51	54
Peer-Individual Domain							
Rebelliousness	–	33	42	46	52	53	55
Friends Delinquent Behavior	–	44	46	49	52	53	56
Friends Use of Drugs	–	27	36	46	57	61	68
Peer Rewards for Antisocial Behavior	–	36	48	53	60	60	63
Favorable Attitudes toward Antisocial Behavior	–	40	49	51	58	58	62
Favorable Attitudes Toward Drug Use	–	27	35	41	53	58	65
Perceived Risks of Drug Use	–	25	31	36	45	49	54
Early Initiation of Drug Use and Antisocial Behavior	–	26	34	37	46	46	51
Sensation Seeking	–	32	38	43	50	52	57
Gang Involvement	–	44	46	47	48	46	46
Average	–	36	42	47	53	55	59

Trends of Selected Risk Factor

Community Transitions and Mobility
Risk Factor - Community Domain

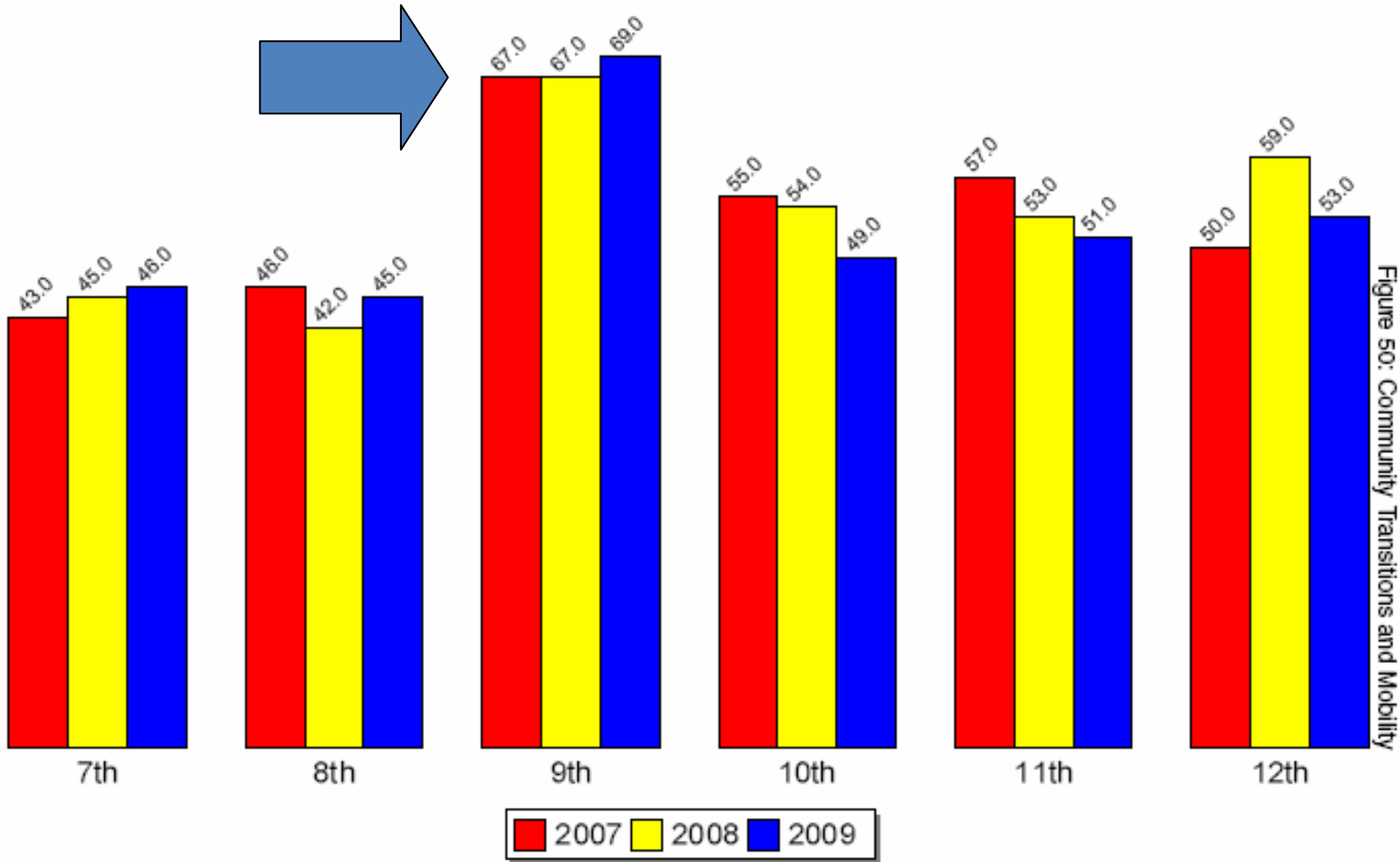


Figure 50: Community Transitions and Mobility

Source: PRIDE Survey

Protective Factor Scores by Grade

Table 2.1: Protective Factor Scale Scores Reported by Surveyed Youth, by Grade

		6th	7th	8th	9th	10th	11th	12th
Community Domain								
	Community Opportunities for Prosocial Involvement	–	45	46	46	42	43	42
	Community Rewards for Prosocial Involvement	–	55	48	48	42	42	42
Family Domain								
	Family Attachment	–	59	51	50	45	45	43
	Family Opportunities for Prosocial Involvement	–	60	51	50	44	44	43
	Family Rewards for Prosocial Involvement	–	64	53	53	46	45	41
School Domain								
	School Opportunities for Prosocial Involvement	–	61	53	58	49	53	52
	School Rewards for Prosocial Involvement	–	55	47	42	36	40	39
Peer-Individual Domain								
	Religiosity	–	47	44	46	41	38	35
	Social Skills	–	63	53	51	43	42	39
	Belief in the Moral Order	–	68	57	55	45	49	44
Average		–	58	50	50	43	44	42



Core Measures – Year 2009

Table 5.1: Core Measures for All Students

Measure	Tobacco	Alcohol	Marijuana
30-Day Use	13.2	28.9	18.2
Perceived Risk	91.0	74.9	74.9
Parental Disapproval	92.7	88.9	91.7
Avg. Age of Onset of Use	12.7	13.2	13.7

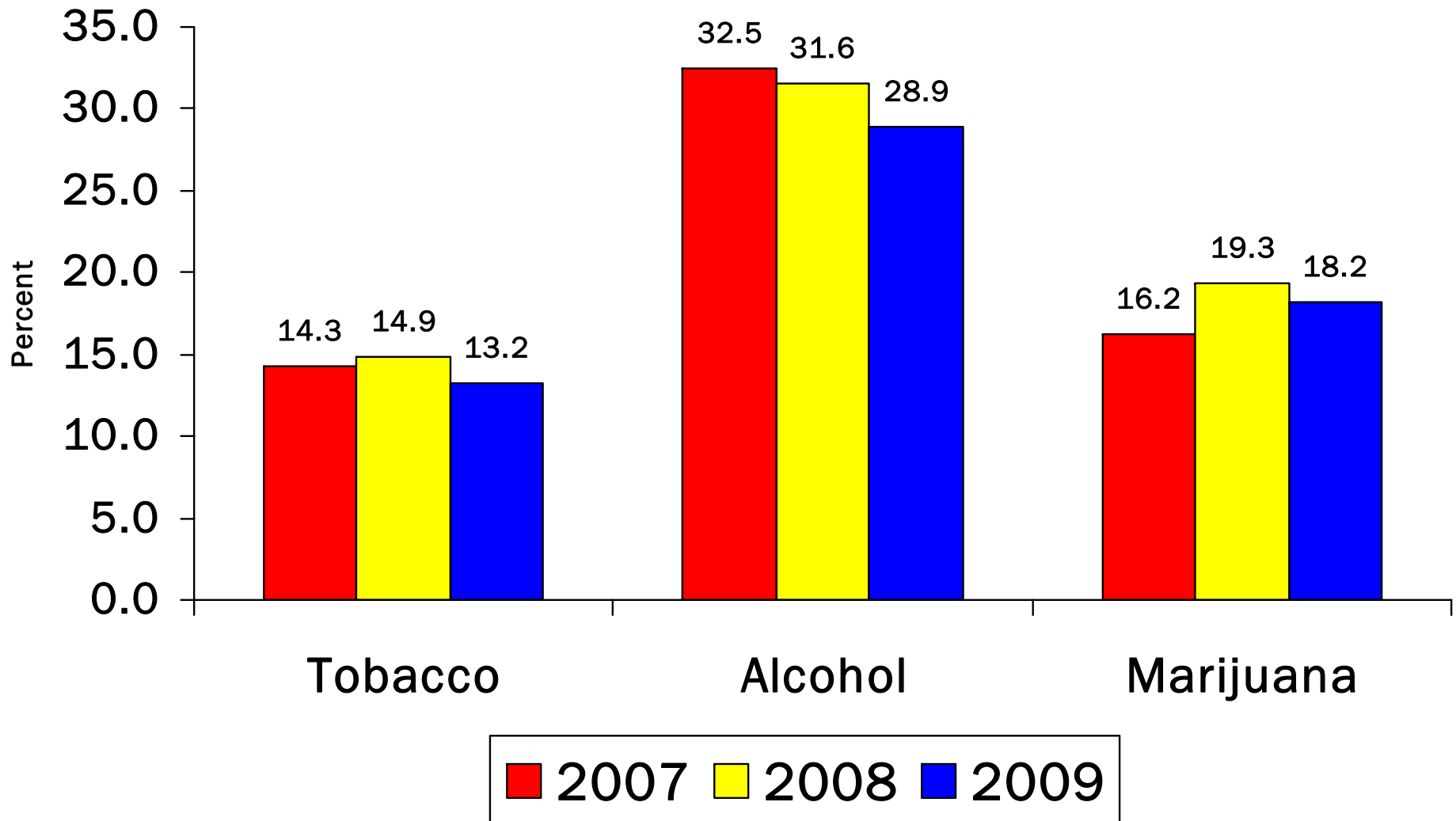
Core Measures – Year 2009

Table 5.2: 30 Day Drug Use

DRUG	30 DAY USE
Smokeless Tobacco	5.7
Cigarettes	13.2
Alcohol	28.9
Inhalants	3.0
Cocaine	2.1
Marijuana	18.2
Heroin	1.3
Hallucinogens	2.0
Ecstasy	2.1
Meth	1.1
Prescription Pain Relievers	4.0
Prescription Tranquilizers	2.1
Prescription Stimulants	2.3

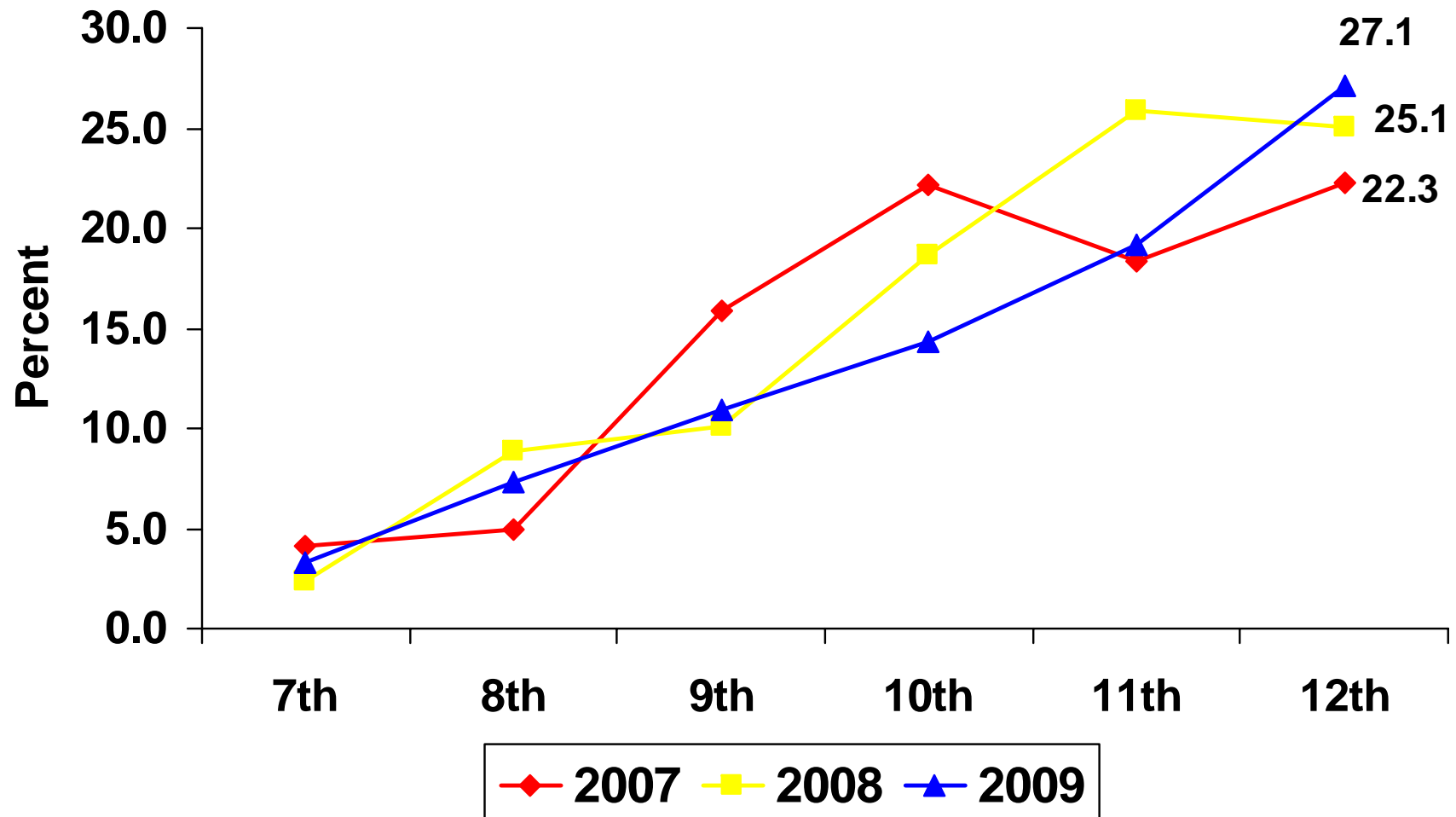
Core Measures – 3 Year Trend

30-Day Use (All Students Grades 7-12)



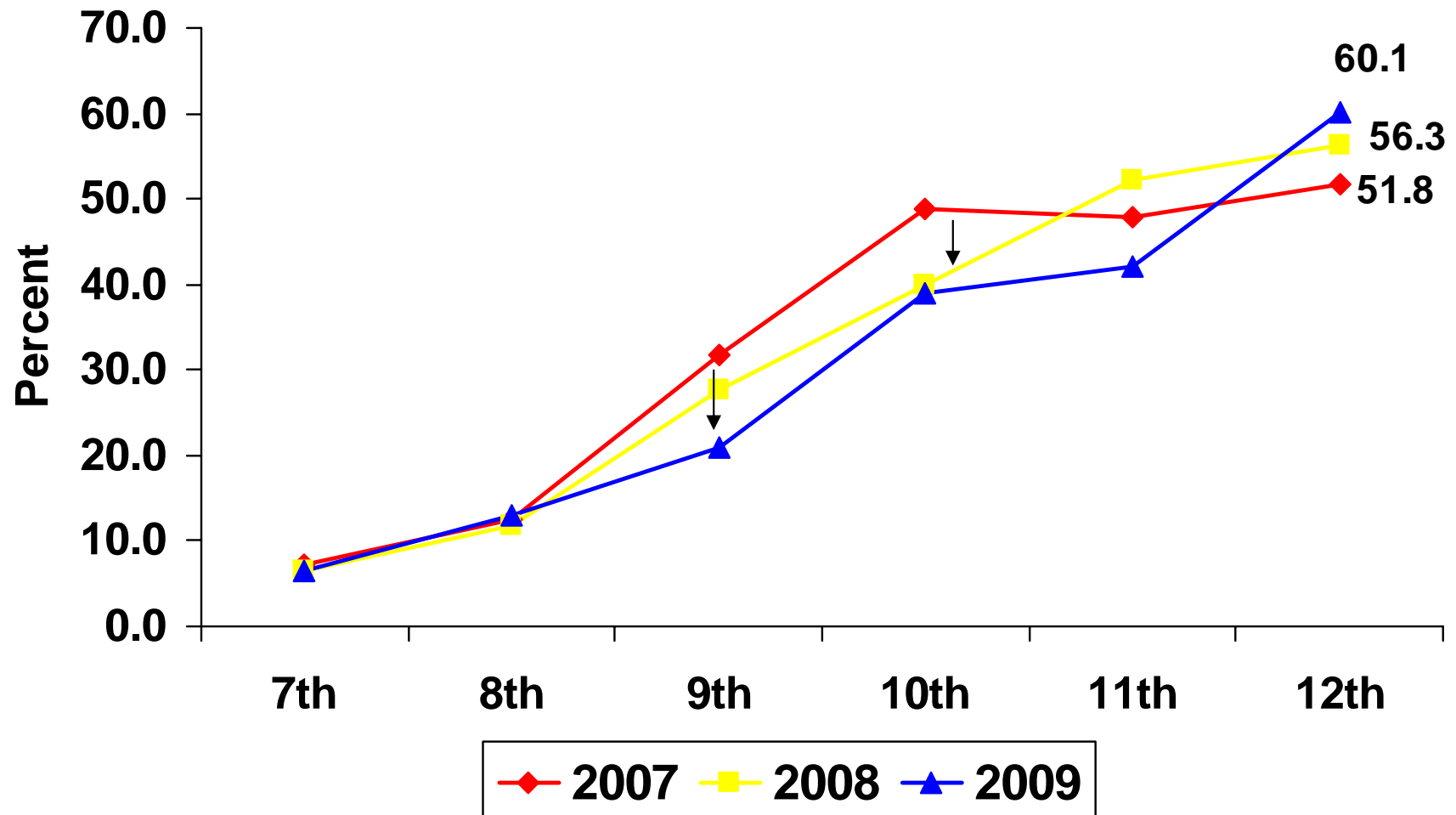
Tobacco Use –Trend by Grade

Past 30-Day Use of Cigarettes



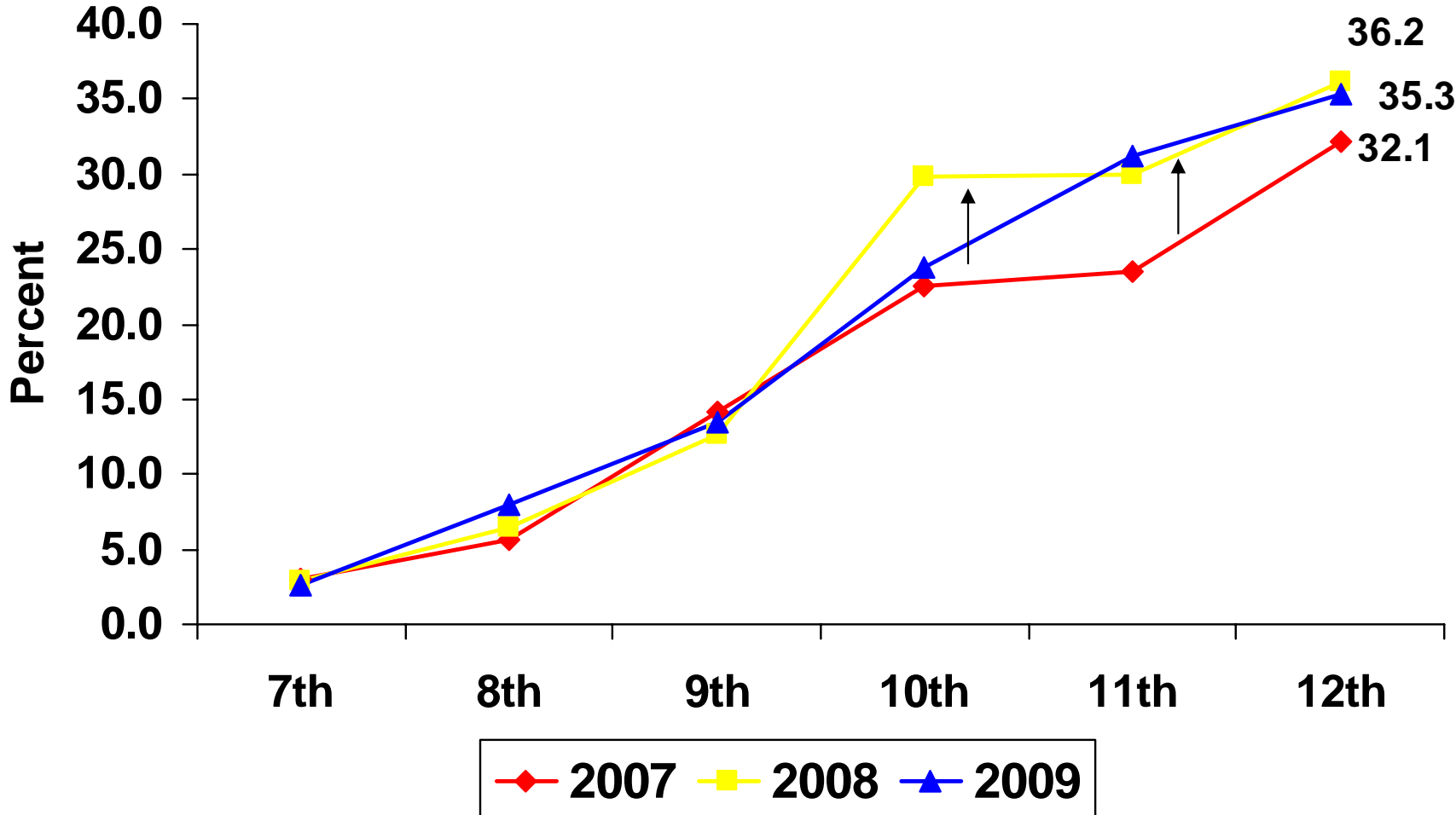
Alcohol Use –Trend by Grade

Past 30-Day Use of Alcohol



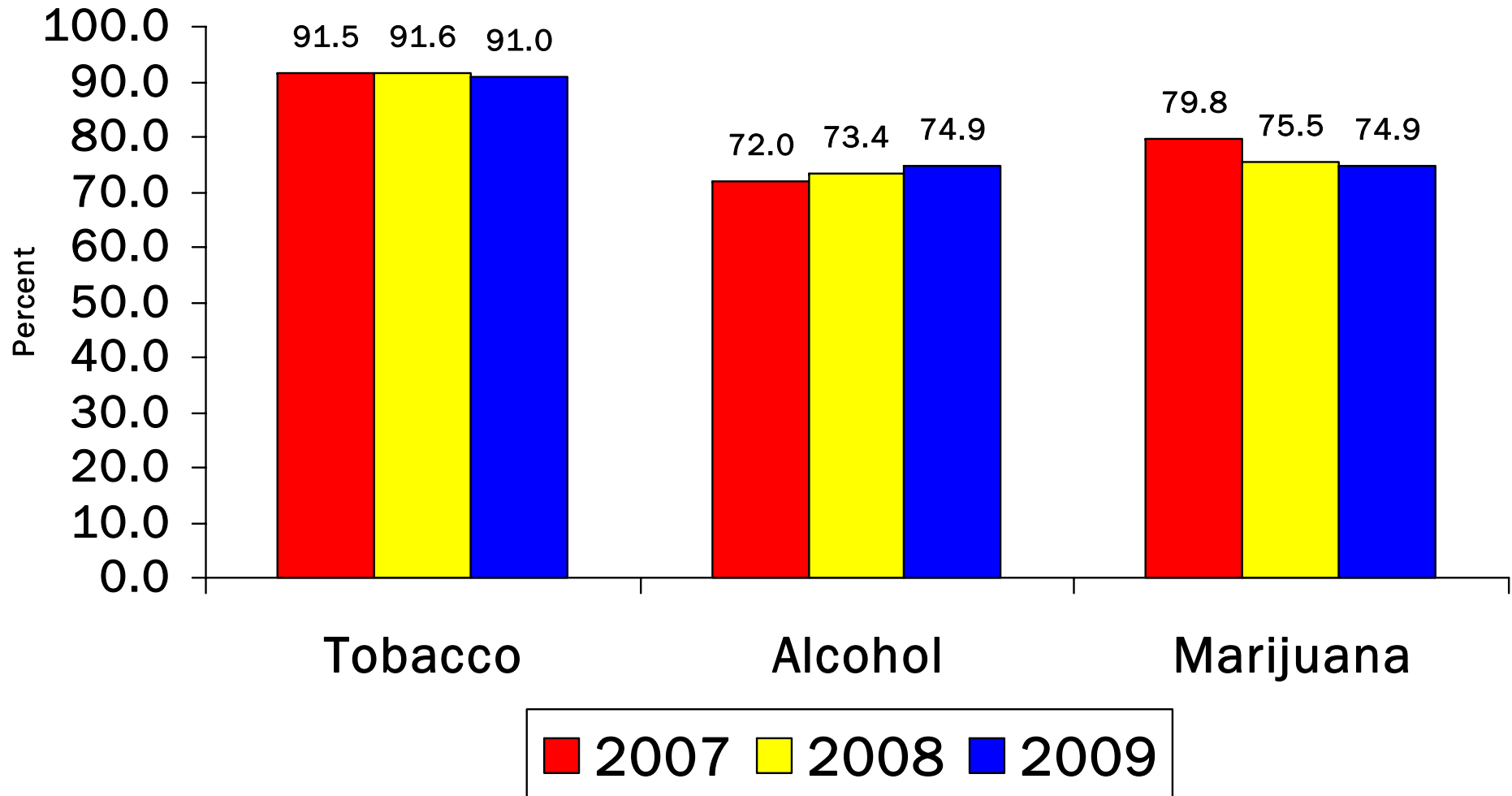
Marijuana Use –Trend by Grade

Past 30-Day Use of Marijuana



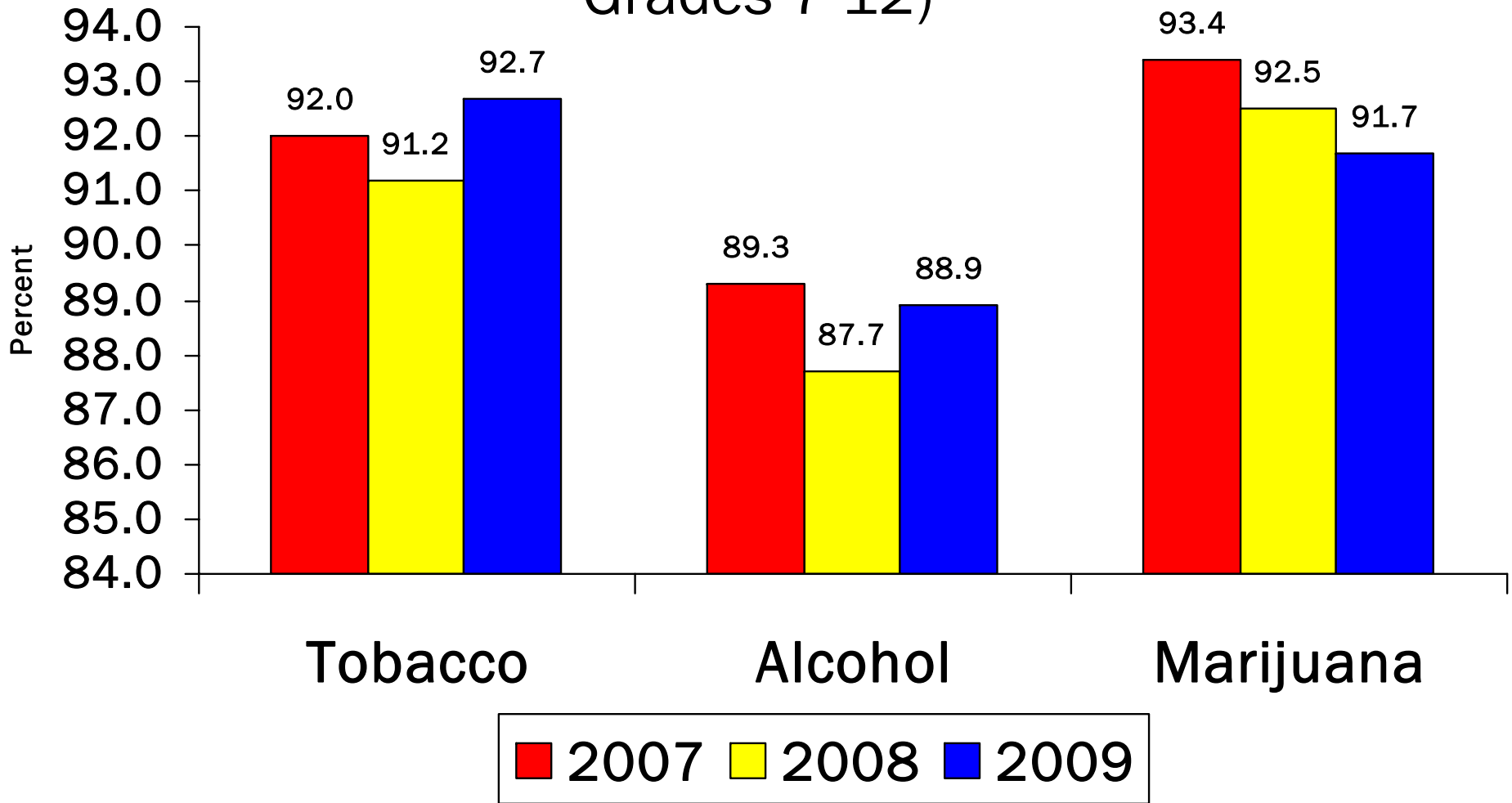
Core Measures – 3 Year Trend

Perceived Risk (All Students Grades 7-12)



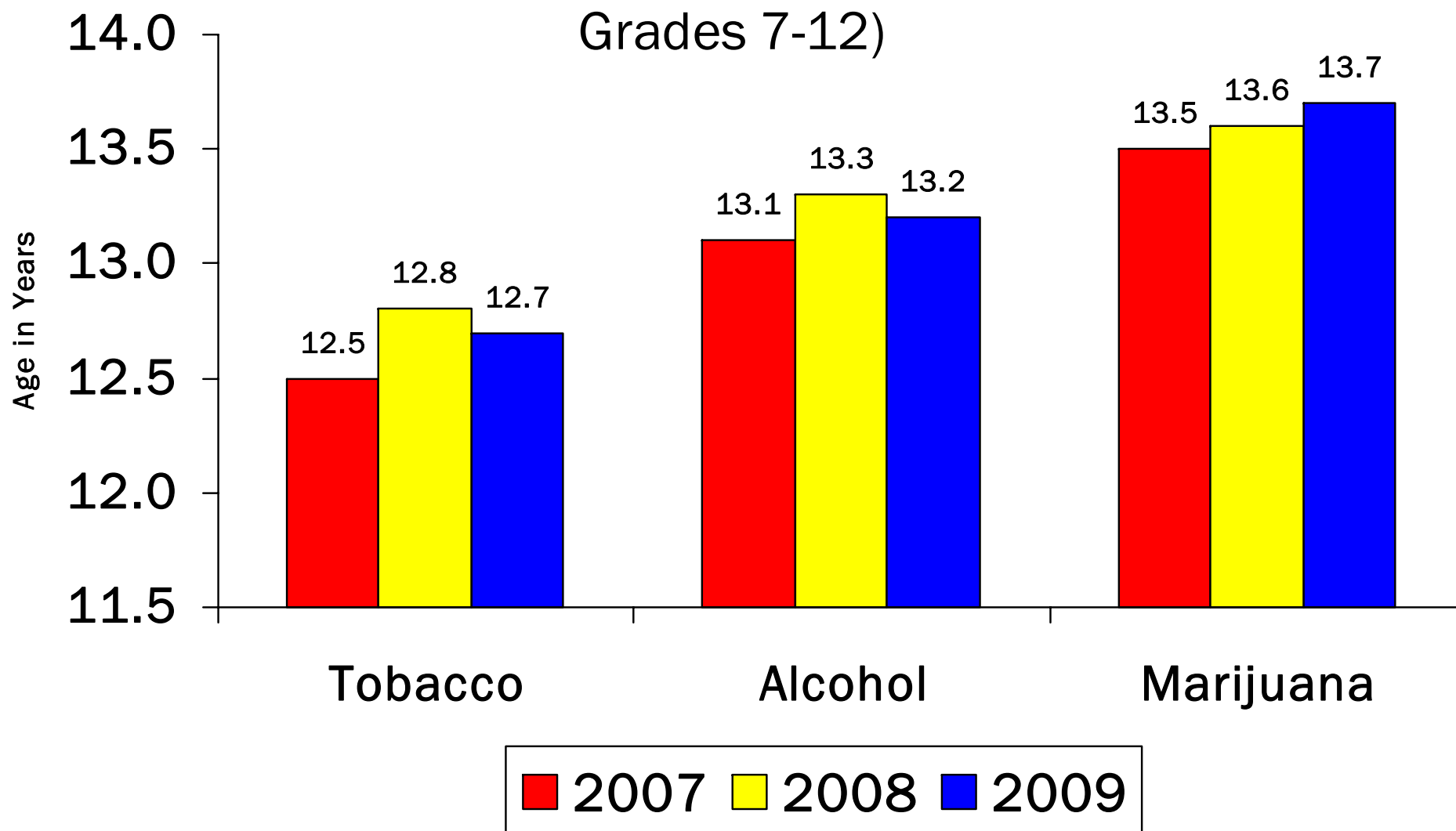
Core Measures – 3 Year Trend

Parental Disapproval (All Students
Grades 7-12)



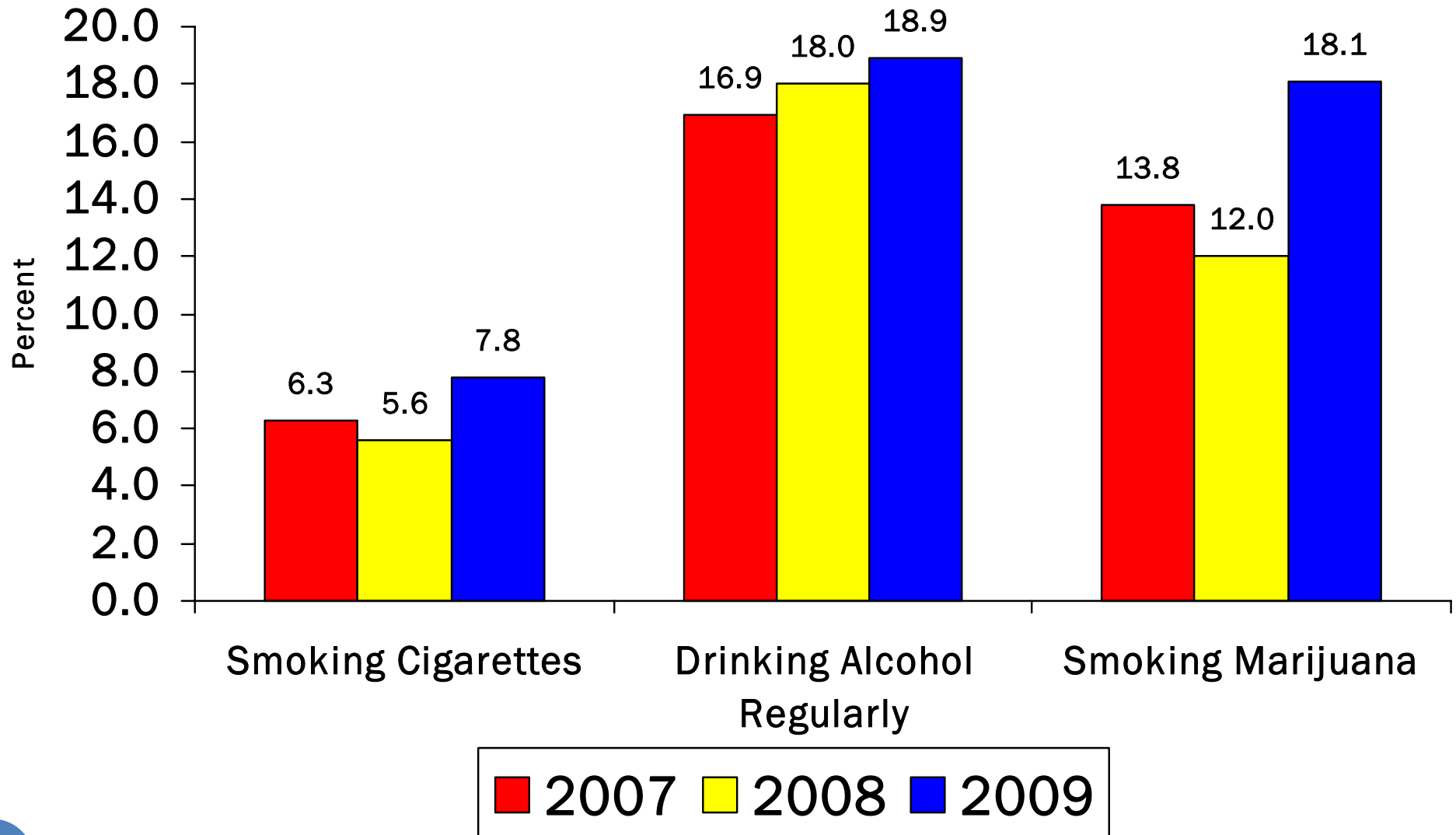
Core Measures – 3 Year Trend

Average Age of Onset (All Students
Grades 7-12)



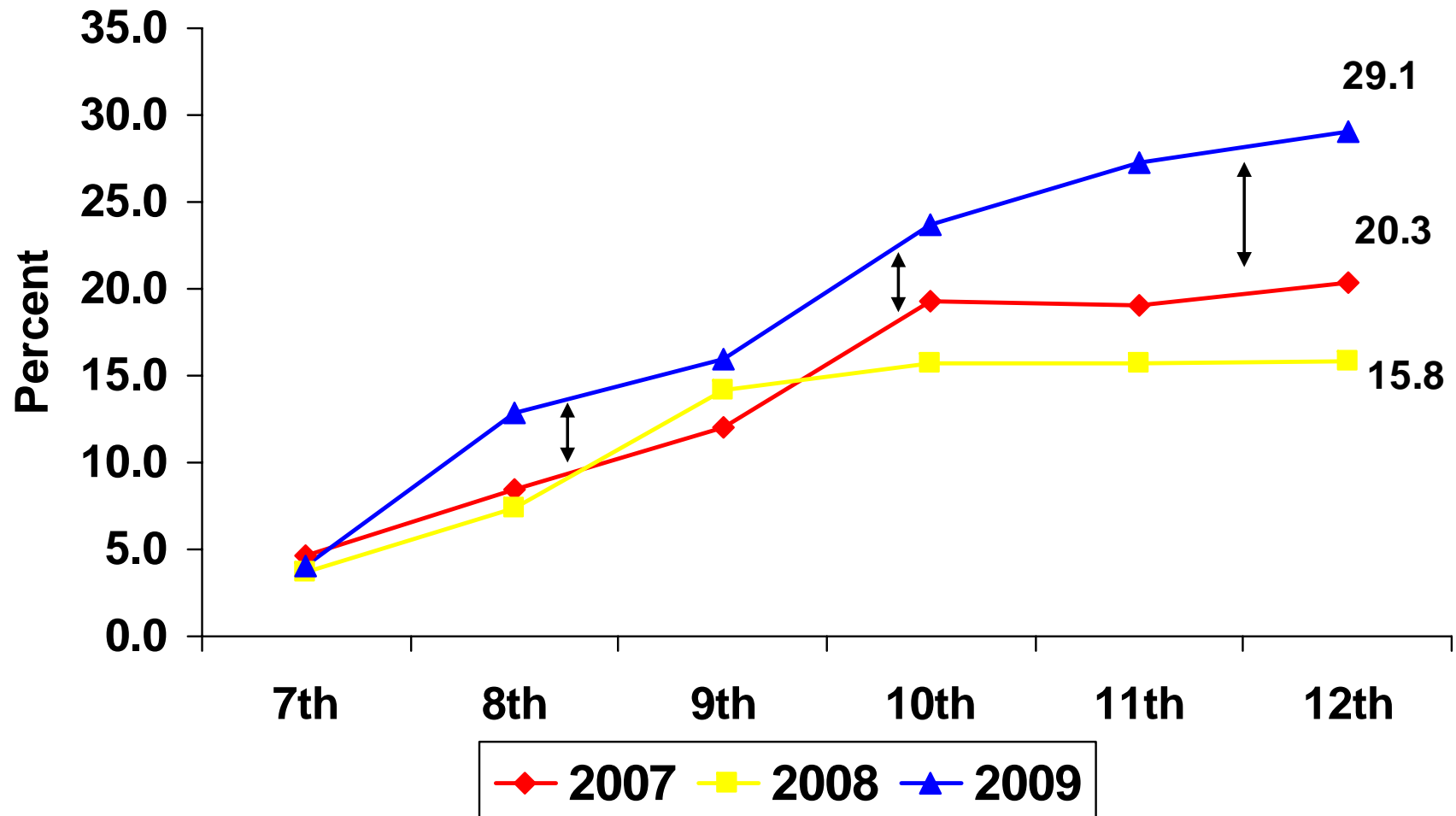
Peer Approval – 3 Year Trend

Peer Approval (All Students Grades 7-12)



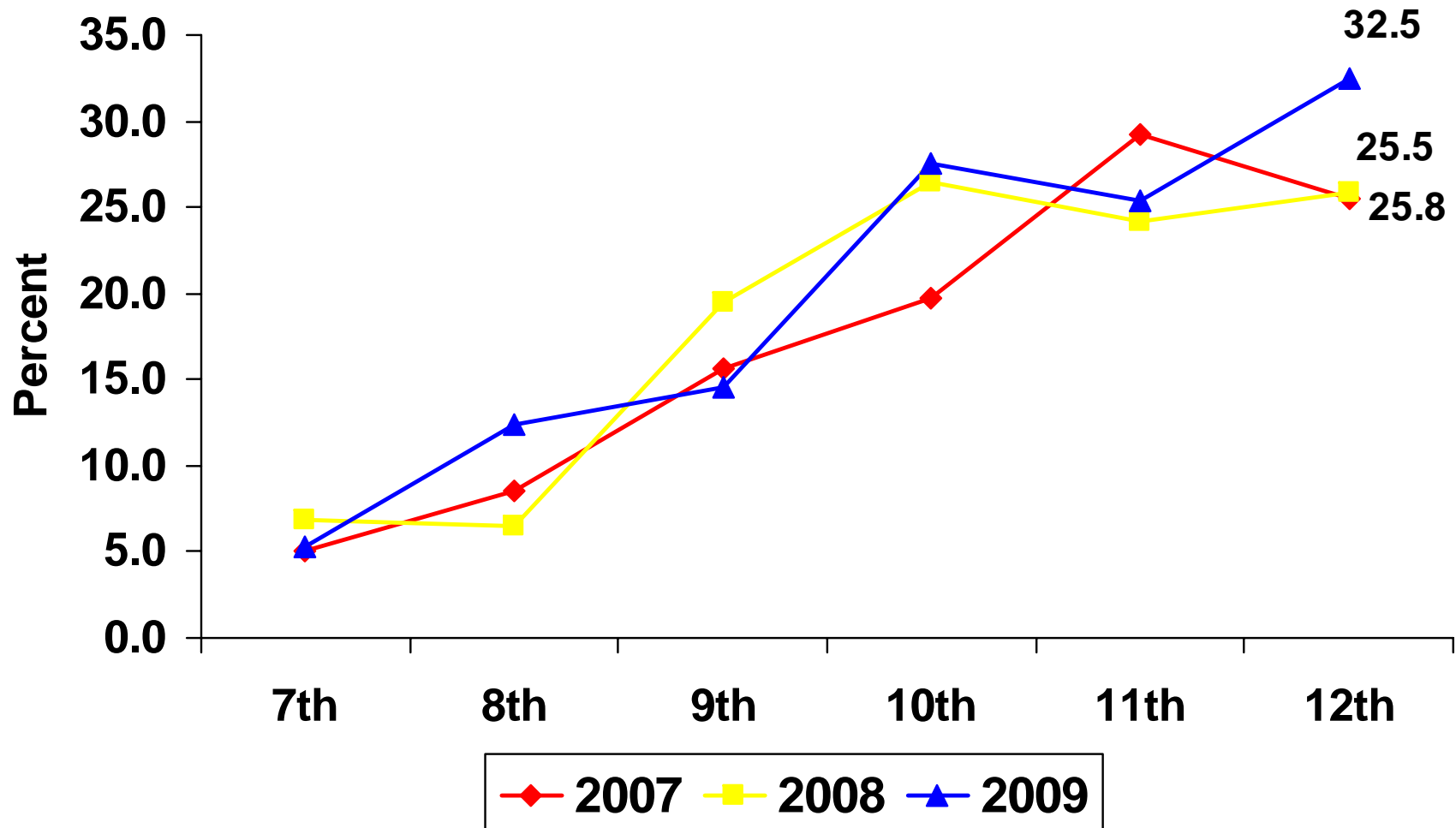
Peer Approval –Trend by Grade

Peer Approval of Smoking Marijuana,
by Grade



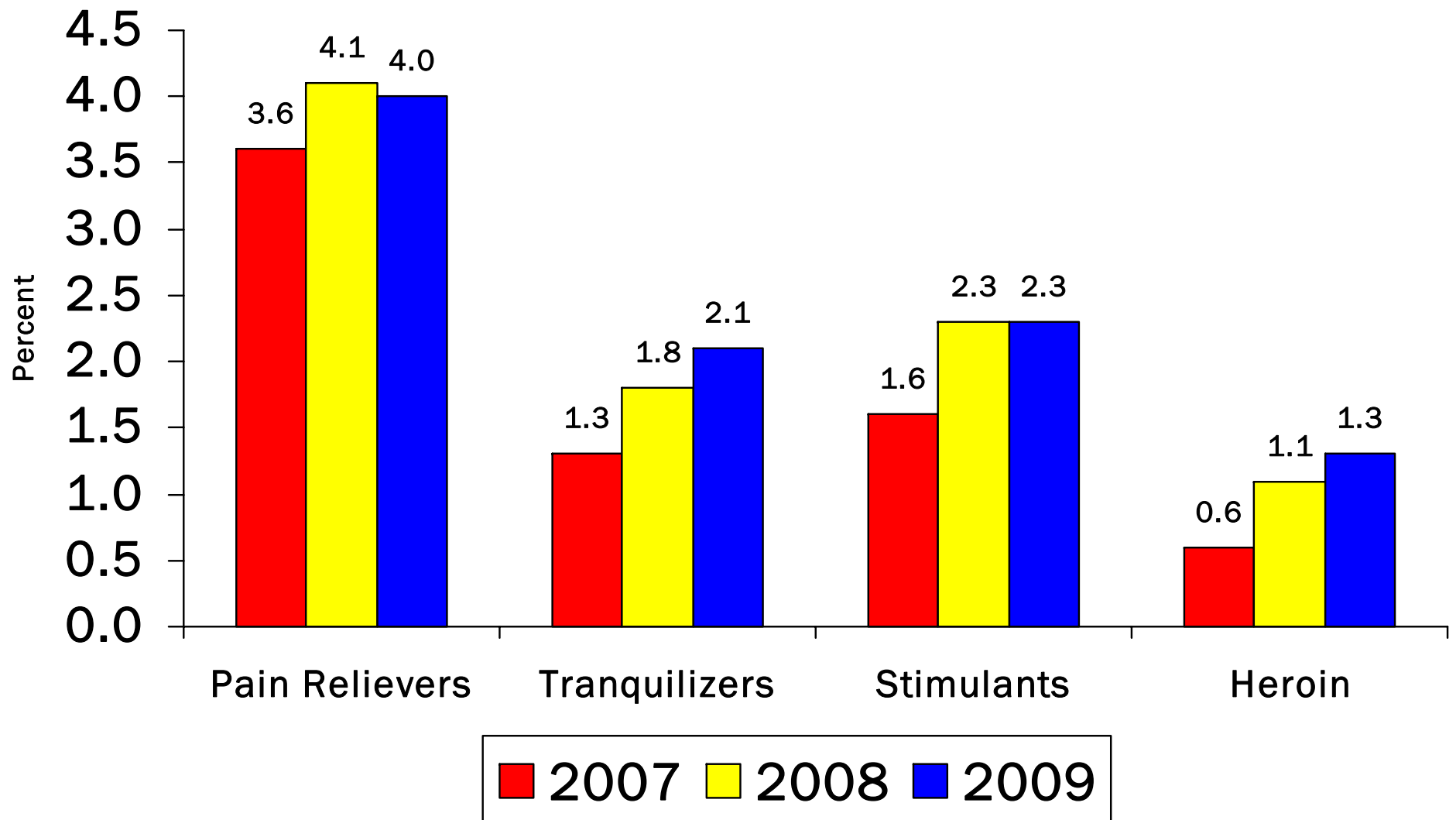
Peer Approval –Trend by Grade

Peer Approval of Drinking Alcohol Regularly,
by Grade



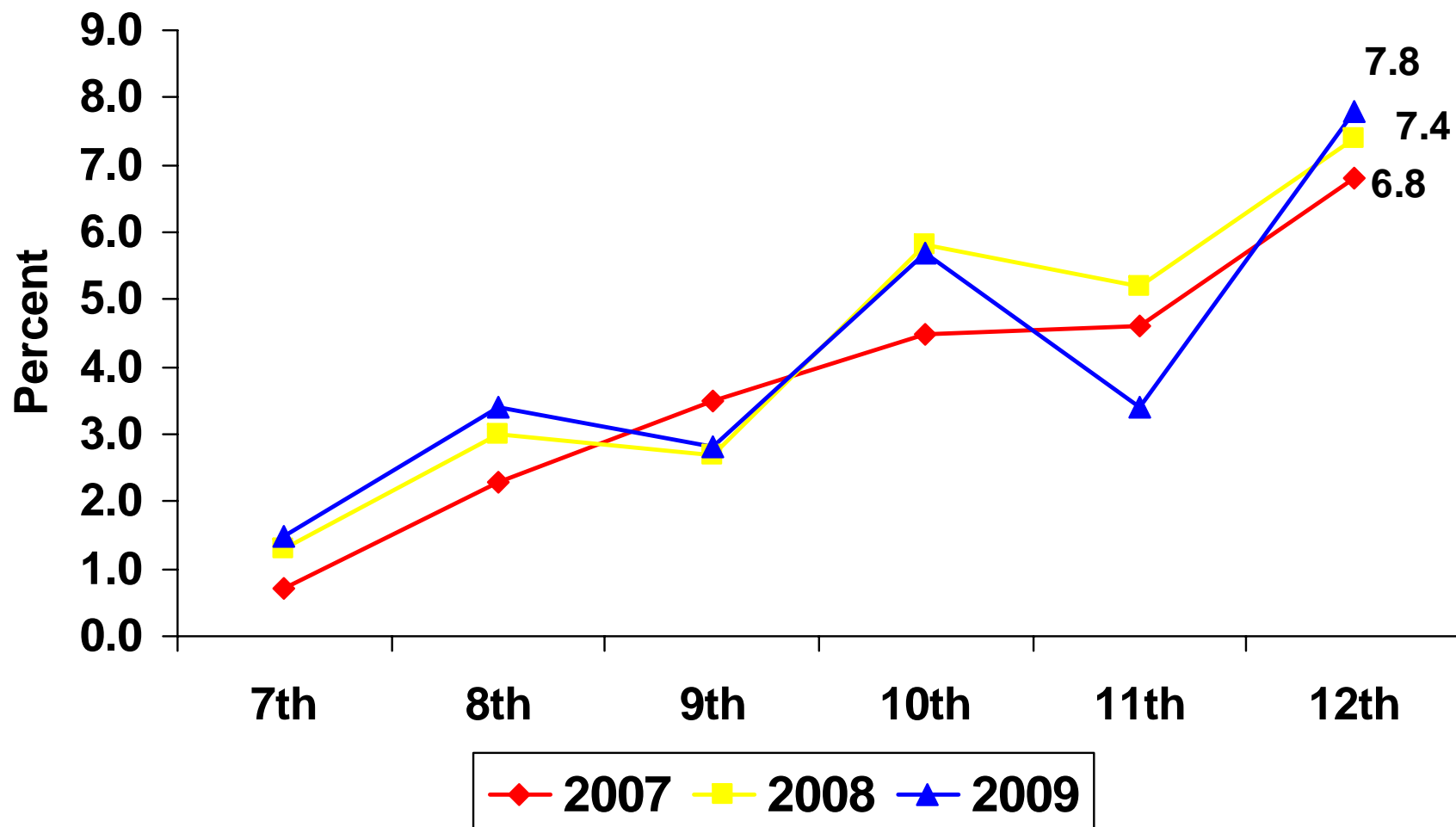
Other Substances – 3 Year Trend

30-Day Use (Grade 7-12)



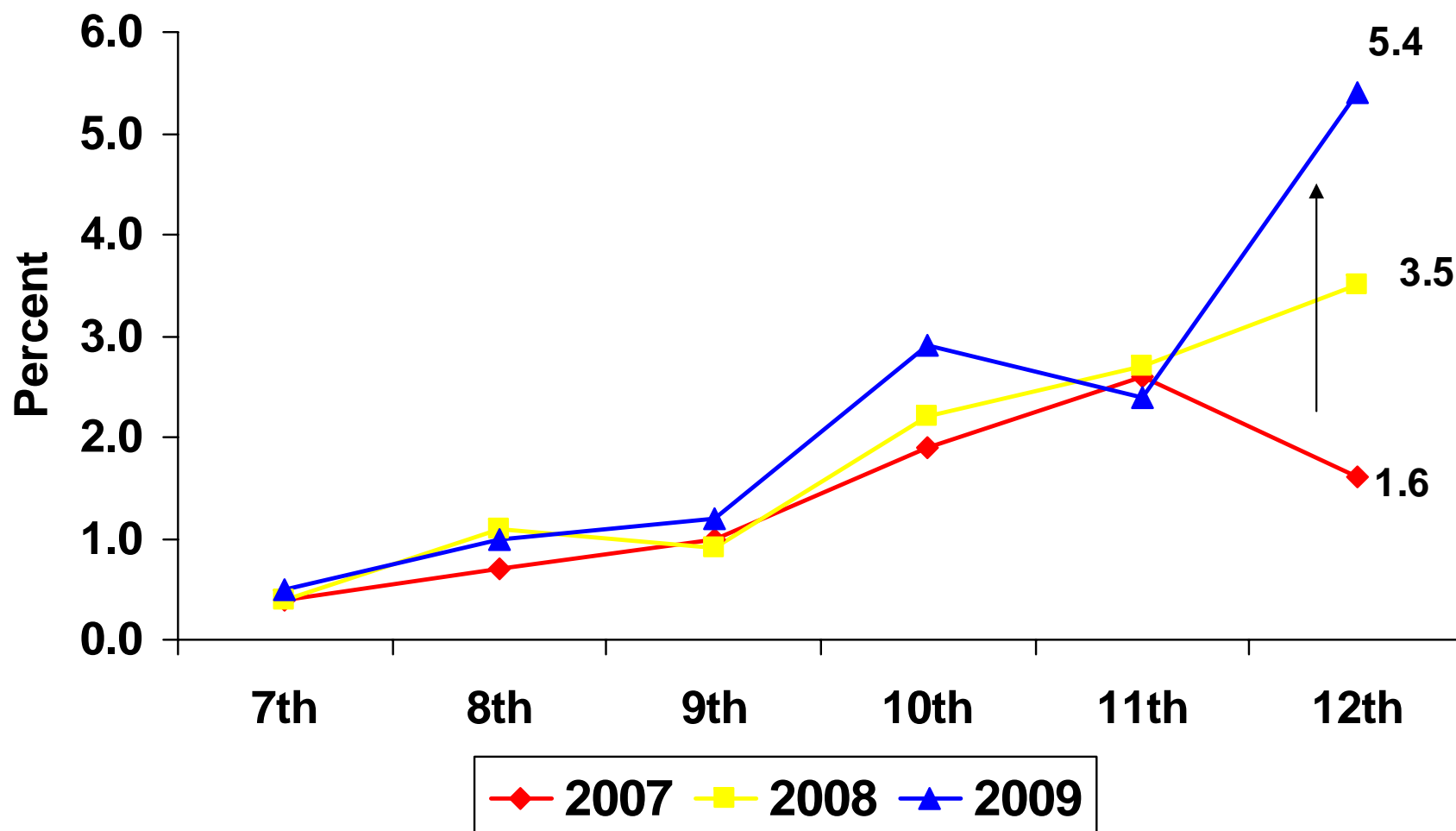
Other Substance – Trend by Grade

Past 30-Day Use of Prescription Pain Relievers
(Vicodin, Oxycontin,...)



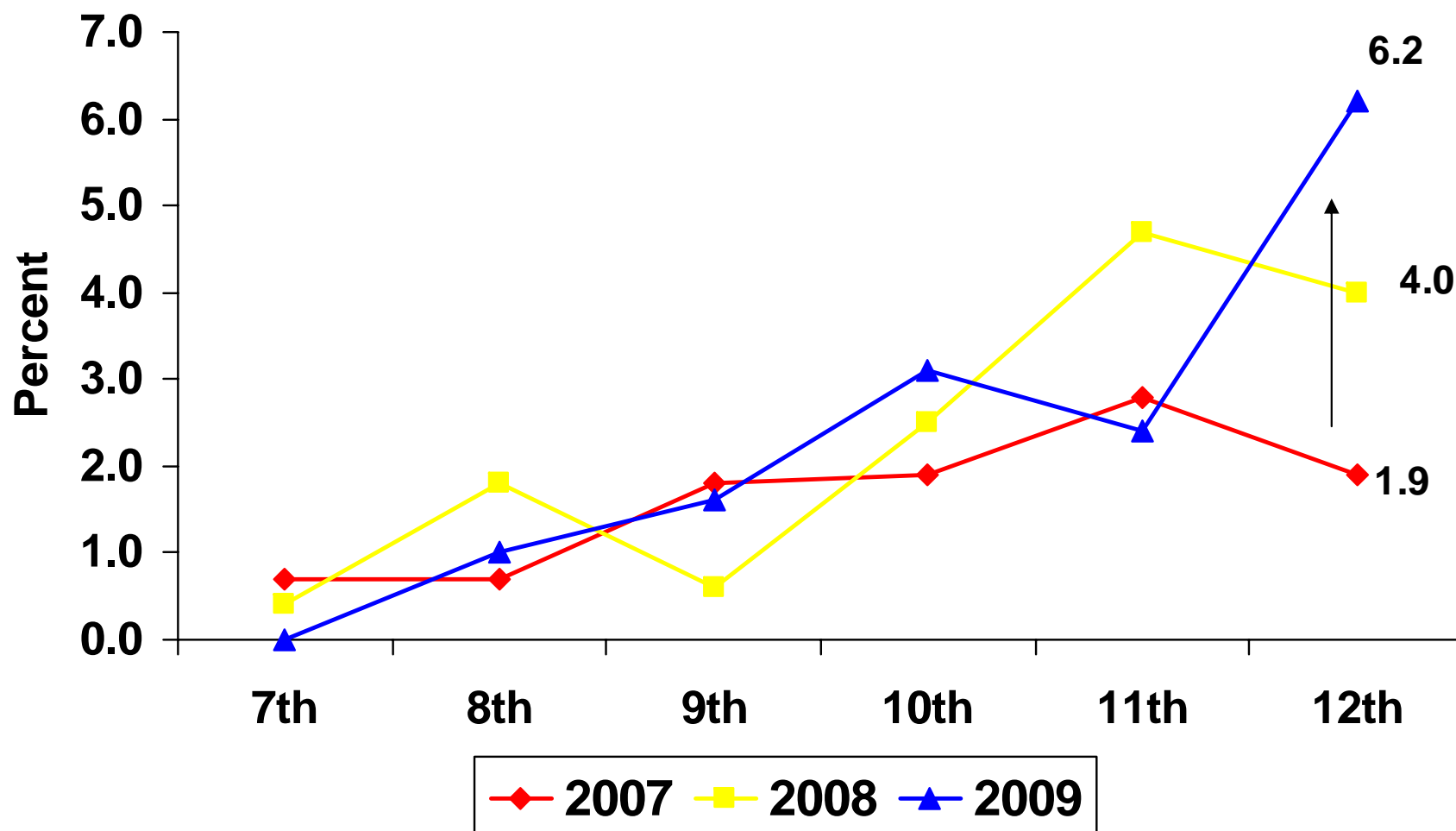
Other Substance – Trend by Grade

Past 30-Day Use of Prescription Tranquilizers
(Xanax, Valium,...)



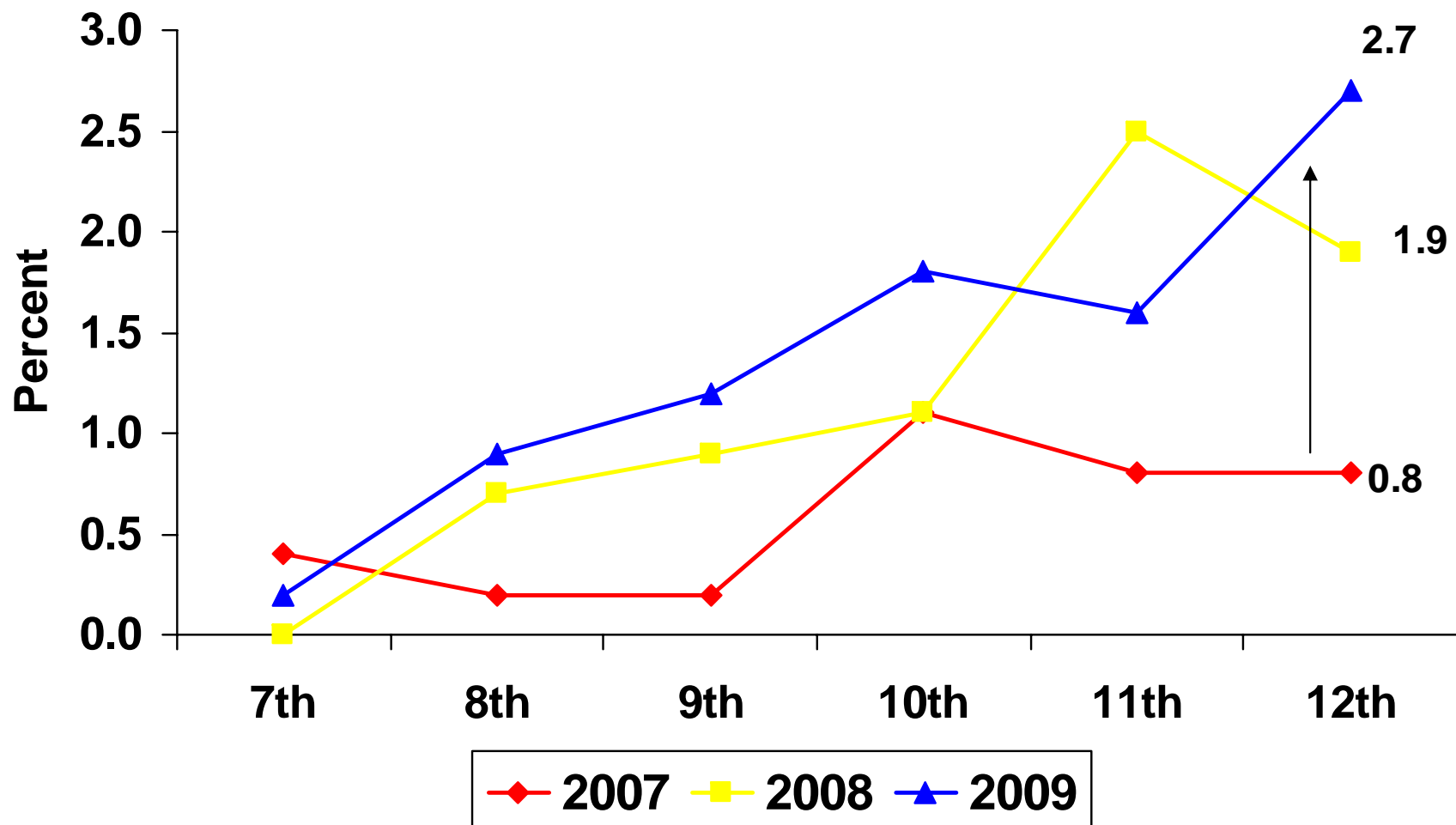
Other Substance – Trend by Grade

Past 30-Day Use of Prescription Stimulants
(Ritalin, Aderall,...)



Other Substance – Trend by Grade

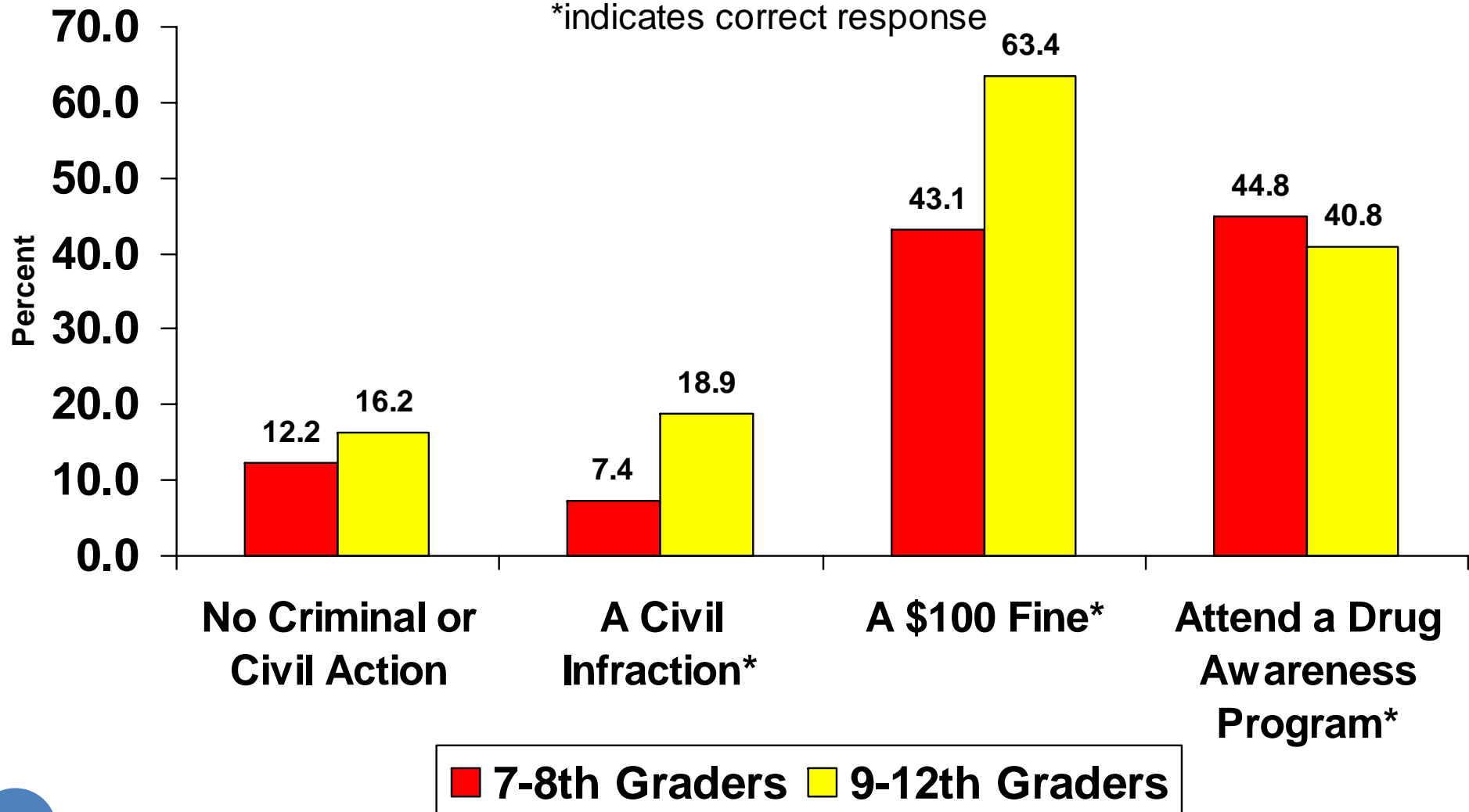
Past 30-Day Use of Heroin



Additional Questions – Year 2009

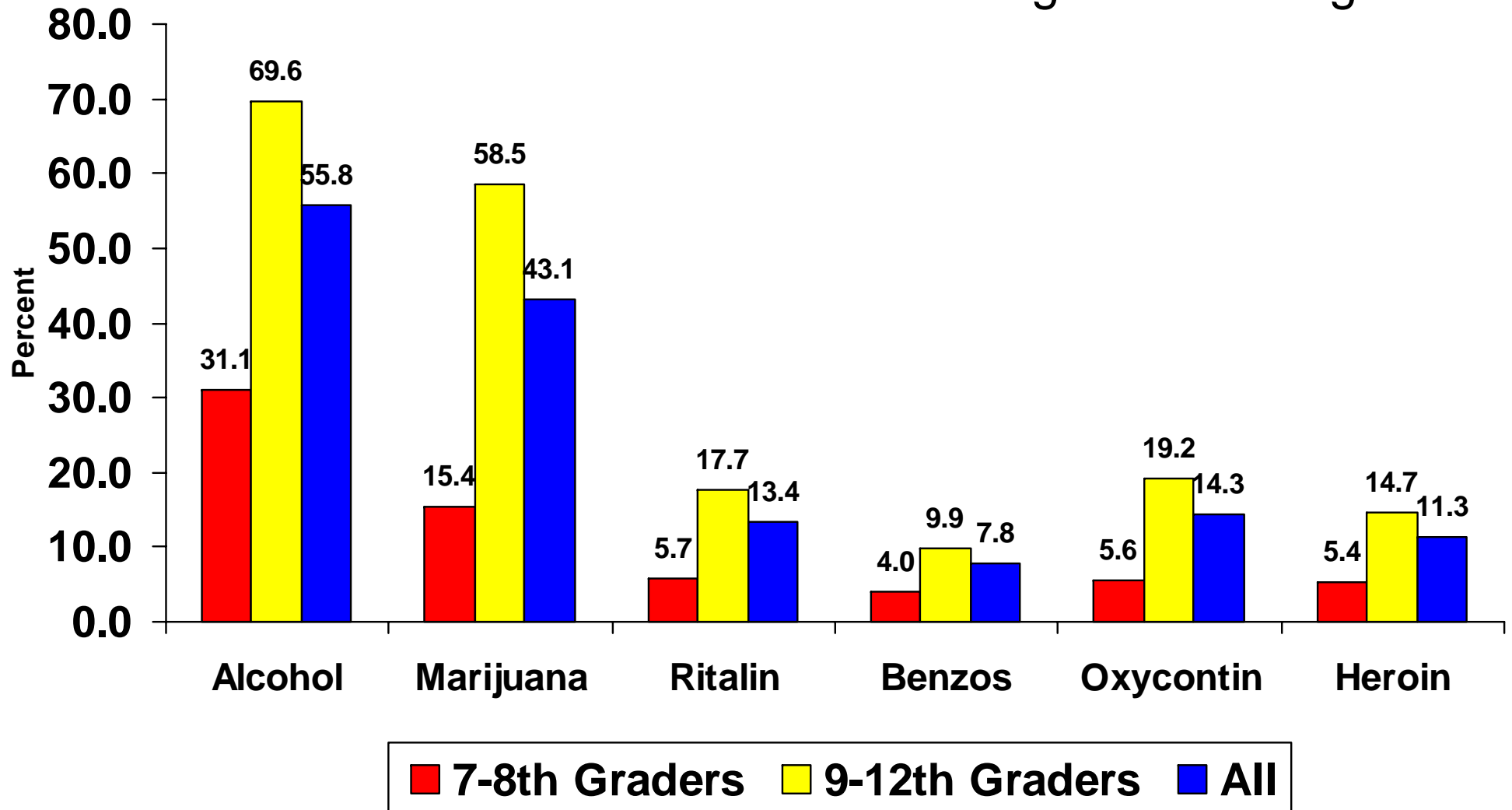
Possession of one ounce or less of marijuana by someone <18 would result in: (select all that apply)

*indicates correct response



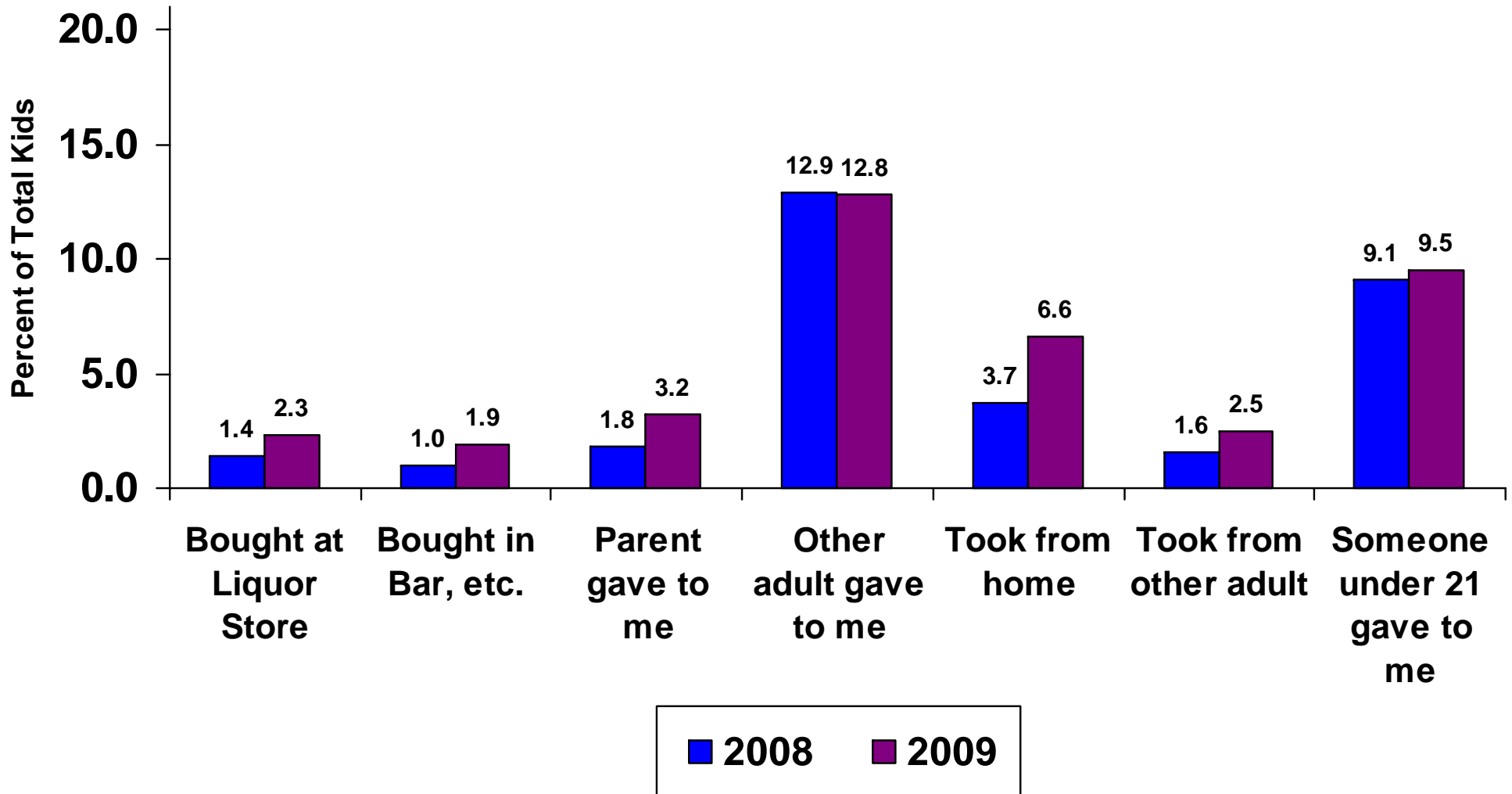
Additional Questions – Year 2009

I would have no trouble obtaining the following:



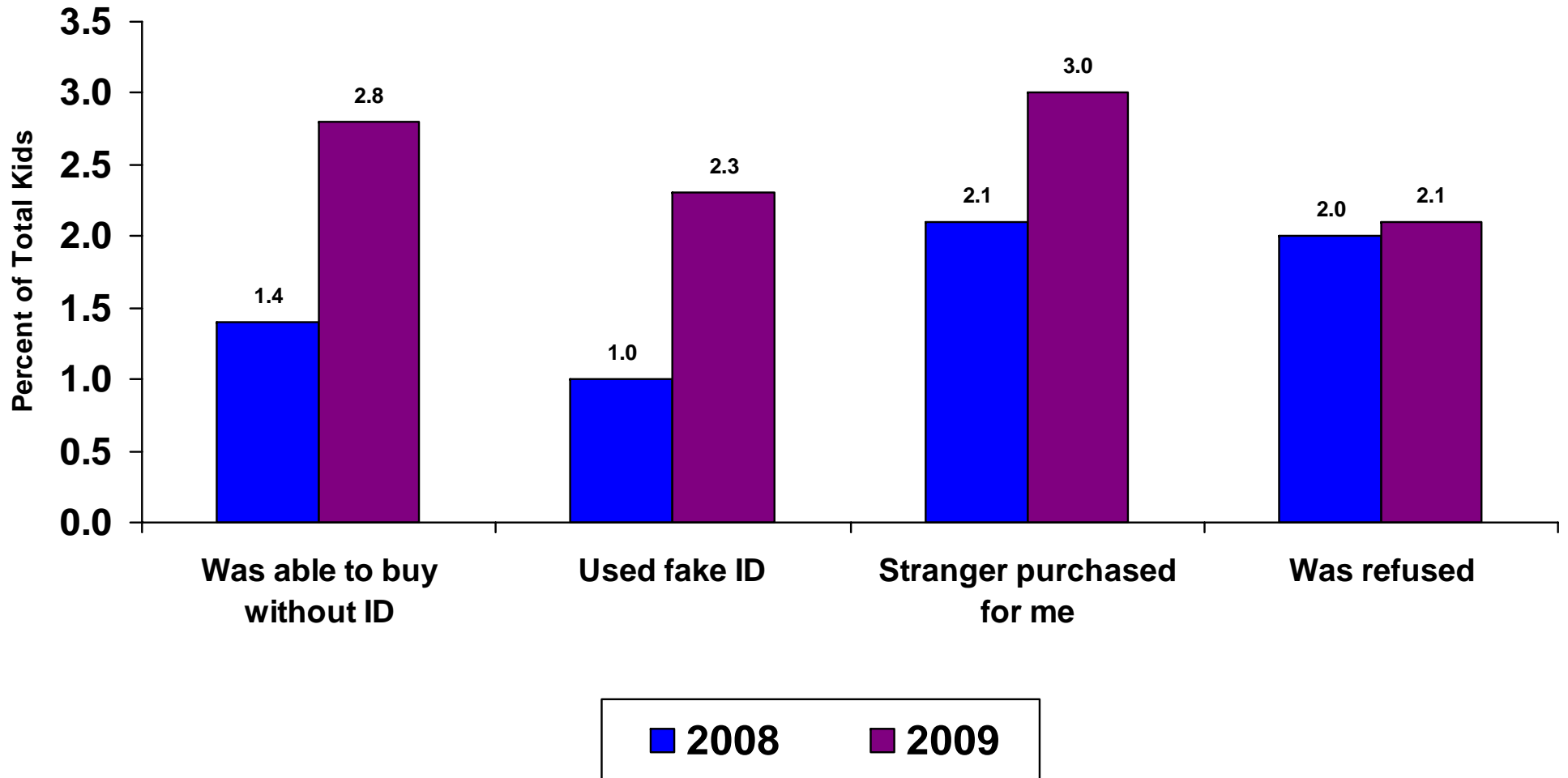
Additional Questions – 2 Year Trend

Usual Source of Alcohol, Past 30-days
(choose all that apply)



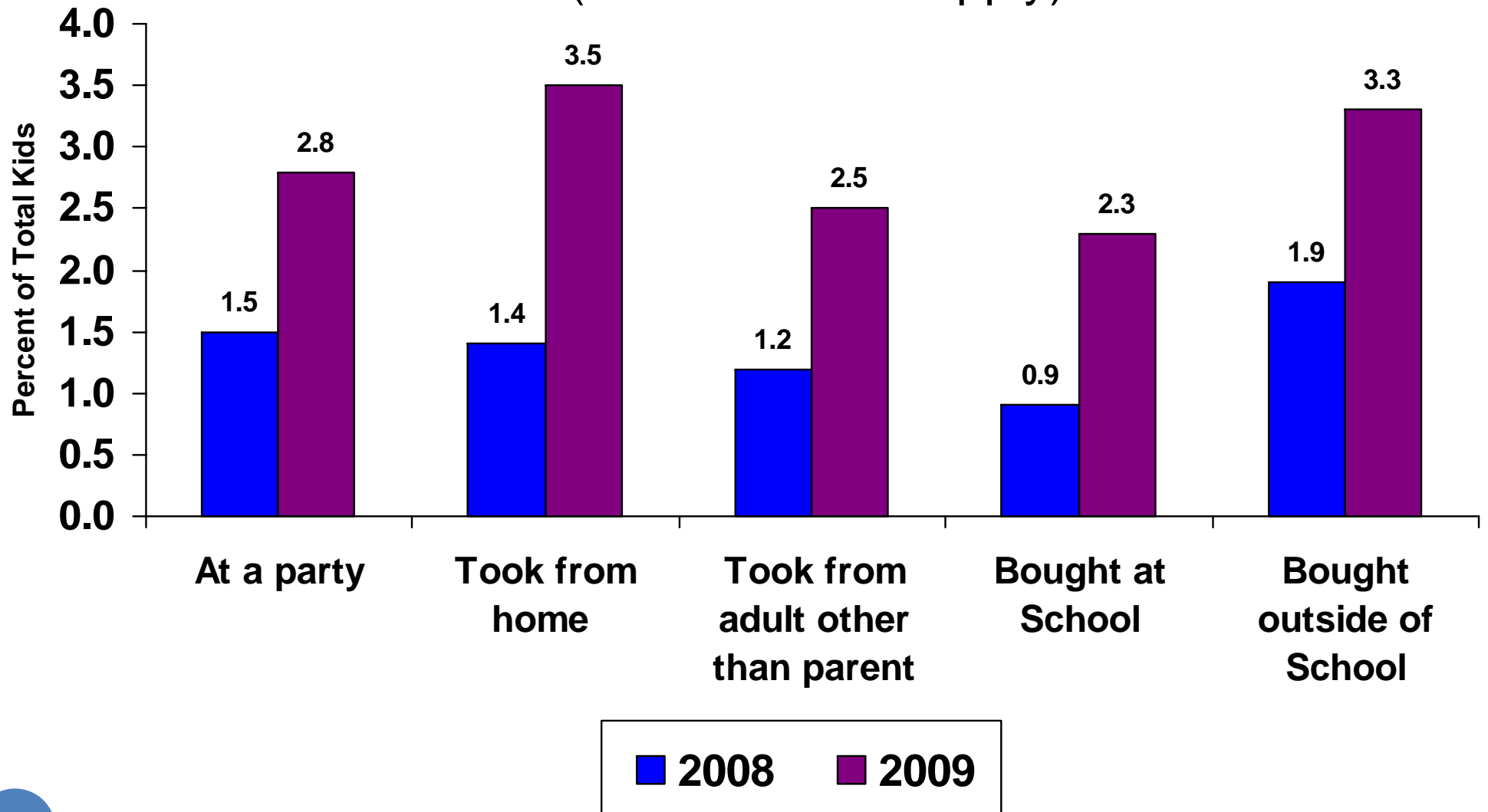
Additional Questions – 2 Year Trend

Usual Result of Attempt to Purchase Alcohol at Liquor Store, Past 30-days (one response only)



Additional Questions– 2 Year Trend

Usual Source of Prescription Drugs, Past 30-days
(choose all that apply)



Current Prevention and Education Efforts

*Drug Free Communities Grant
Weymouth Public Schools
Town of Weymouth*

Goals

- To increase the perception of the risk of harm of substance use among youth
- Delay the onset of ATOD use among youth
- Decrease the number of youth using substances in the past 30 days
- Increase the perception of disapproval of substance use among all people in Weymouth

Strategies

- Continue to Build Community Resources
- Continue ATOD Abuse Education Programs
- Evidence Based Drug Prevention Programs in the Schools and the Community
- Evaluate Progress

Weymouth Youth Coalition's Substance Abuse Prevention Team

Lyn Frano

Substance Abuse Prevention Coordinator

Town of Weymouth

75 Middle Street, Weymouth, MA 02189

Phone: 781-340-5008

Fax: 781-682-6112

Email: mfrano@weymouth.ma.us



Institute for Community Health

163 Gore Street, Cambridge MA 02141

617-499-6613

www.icommunityhealth.org



Institute for Community Health

A collaboration of the Cambridge Health Alliance, Mount Auburn Hospital, and Partners Healthcare